

2014 AS core A區動物房健康監測

分類	檢測項目	檢測結果	檢測結果	檢測結果	檢測結果		
		3/10	6/4	9/10	12/16		
血清學 檢測	ELISA 檢測結果	1	<i>Mycoplasma pulmonis</i>	0/31	0/31	0/31	0/30
		2	Lymphocytic choriomeningitis virus	0/31	0/31	0/31	0/30
		3	Pneumonia virus of mice	0/31	0/31	0/31	0/30
		4	Sendai virus	0/31	0/31	0/31	0/30
		5	Theiler's murine encephalomyelitis virus (TMEV, GD)	0/31	0/31	0/31	0/30
		6	Ectromelia virus	0/31	0/31	0/31	0/30
		7	Hantaan virus	0/31	0/31	0/31	0/30
		8	Reovirus 3	0/31	0/31	0/31	0/30
		9	Mouse adenovirus	0/31	0/31	0/31	0/30
		10	Mouse hepatitis virus	0/31	0/31	0/31	0/30
		11	Mouse parvovirus	0/31	0/31	0/31	0/30
		12	Minute virus of mice	0/31	0/31	0/31	0/30
		13	Epizootic diarrhea of infant mice virus	0/31	0/31	0/31	0/30
		14	<i>Encephalitozoon cuniculi</i>	0/31	0/31	0/31	0/30
		15	Murine norovirus	0/31	0/31	0/31	0/30
		16	Polyoma virus	0/31	0/31	0/31	0/30
細菌學 分離 與 鑑定	呼吸道 病原	1	<i>Bordetella bronchiseptica</i>	0/31	0/31	0/31	0/30
		2	<i>Corynebacterium kutscheri</i>	0/31	0/31	0/31	0/30
		3	<i>Klebsiella pneumoniae</i>	0/31	0/31	0/31	0/30
		4	<i>Pasteurella pneumotropica</i>	0/31	0/31	0/31	0/30
		5	<i>Pseudomonas aeruginosa</i>	0/31	0/31	0/31	0/30
		6	<i>Staphylococcus aureus</i>	0/31	0/31	0/31	0/30
		7	<i>Streptococcus pneumoniae</i>	0/31	0/31	0/31	0/30
		8	<i>Klebsiella oxytoca</i>	0/31	0/31	0/31	0/30
		9	<i>Streptococcus equi</i> subsp. <i>Zooepidemicus</i>	0/31	0/31	0/31	0/30
		10	β -hemolytic <i>Streptococcus</i>	0/31	0/31	0/31	0/30
	消化道 病原	11	<i>Citrobacter rodentium</i>	0/31	0/31	未檢驗	未檢驗
		12	<i>Pseudomonas aeruginosa</i>	0/31	0/31	0/31	0/30
		13	<i>Salmonella spp.</i>	0/31	0/31	0/31	0/30
		14	<i>Klebsiella oxytoca</i>	0/31	0/31	0/31	0/30
		15	<i>Klebsiella pneumoniae</i>	0/31	0/31	0/31	0/30
		16	<i>Campylobacter jejuni</i>	0/31	0/31	0/31	0/30
寄生蟲 檢測	外寄生蟲	1	Flea	0/31	0/31	0/31	0/30
		2	Louse	0/31	0/31	0/31	0/30
		3	Mite	0/31	0/31	0/31	0/30
	大小鼠蟻蟲	4	<i>Syphacia spp.</i>	0/31	0/31	0/31	0/30
	腸道蠕蟲	5	<i>Aspiculuris tetraptera</i>	0/31	0/31	0/31	0/30
		6	<i>Rodentolepis nana</i>	0/31	0/31	0/31	0/30
		7	<i>Hymenolepis diminuta</i>	0/31	0/31	0/31	0/30
	腸道原蟲	8	<i>Spitronucleus spp.</i>	0/31	0/31	0/31	0/30
		9	<i>Giardia spp.</i>	0/31	0/31	0/31	0/30
		10	<i>Chilomastix spp.</i>	0/31	0/31	0/31	0/30
		11	<i>Eimeria spp.</i>	0/31	0/31	0/31	0/30
		12	<i>Entamoeba spp.</i>	0/31	0/31	0/31	0/30
		13	<i>Hexamastix spp.</i>	0/31	0/31	0/31	0/30
		14	<i>Trichomonads</i>	0/31	0/31	0/31	0/30
PCR 檢測	Cecum	1	<i>Clostridium piliforme</i>	0/31	0/31	0/31	0/30
	Lung	2	<i>Pneumocystis murina</i>	0/31	0/31	0/31	0/30
	Feces	3	<i>Helicobacter spp.</i>	0/31	0/31	0/31	0/30
剖檢及 肉眼 病理學	Lung, spleen, liver, kidney, stomach, pancreas, intestines, lympho nodes, reproductive tract, eyes, harderian gland, salivary gland, and brain			NSF (Non Specific Founding)	NSF (Non Specific Founding)	Refer to the attachment	Refer to the attachment

檢測說明 1.檢測單位：國家實驗動物中心 2.檢測結果：陽性檢體數/總檢體數。「0」表示未檢測出此病原。

報告簽署人：



2015.1.7



AS core 2014 A區動物房例行健康監測

Date	Serial NO.	動物來源	Species	Specimen	Gender	Strain	Quantity	
12/16	103S4#01	生化所	Mouse	活體	ICR		1	
	103S4#02						1	
	103S4#03						1	
	103S4#04	生醫所					1	
	103S4#05						1	
	103S4#06						1	
	103S4#07						1	
	103S4#08						1	
	103S4#09						1	
	103S4#10						1	
	103S4#11						1	
	103S4#12						1	
	103S4#13						1	
	103S4#14						1	
	103S4#15						1	
	103S4#16						1	
	103S4#17						細生所	1
	103S4#18							1
	103S4#19	1						
	103S4#20	農生中心					1	
	103S4#21						1	
	103S4#22	基因體中心					1	
	103S4#23						1	
	103S4#24						1	
	103S4#25	分生所					1	
	103S4#26						1	
	103S4#27						1	
	103S4#28						1	
	103S4#29	AS core					1	
	103S4#30						1	
合計							30	

報告簽署人：

獸醫師
曾信友
台獸師字6079

2015.1.7

管理師
2015.1.07
王毓權

2014 AS core B區動物房健康監測

分類	檢測項目	檢測結果	檢測結果	檢測結果	檢測結果	
		NA	5/26	9/10	12/16	
血清學 檢測	ELISA 檢測結果	1	<i>Mycoplasma pulmonis</i>	0/5	0/4	0/8
		2	Lymphocytic choriomeningitis virus	0/5	0/4	0/8
		3	Pneumonia virus of mice	0/5	0/4	0/8
		4	Sendai virus	0/5	0/4	0/8
		5	Theiler's murine encephalomyelitis virus (TMEV, GD)	0/5	0/4	0/8
		6	Ectromelia virus	0/5	0/4	0/8
		7	Hantaan virus	0/5	0/4	0/8
		8	Reovirus 3	0/5	0/4	0/8
		9	Mouse adenovirus	0/5	0/4	0/8
		10	Mouse hepatitis virus	0/5	0/4	0/8
		11	Mouse parvovirus	0/5	0/4	0/8
		12	Minute virus of mice	0/5	0/4	0/8
		13	Epizootic diarrhea of infant mice virus	0/5	0/4	0/8
		14	<i>Encephalitozoon cuniculi</i>	0/5	0/4	0/8
		15	Murine norovirus	0/5	0/4	0/8
		16	Polyoma virus	0/5	0/4	0/8
細菌學 分離 與 鑑定	呼吸道 病原	1	<i>Bordetella bronchiseptica</i>	0/5	0/4	0/8
		2	<i>Corynebacterium kutscheri</i>	0/5	0/4	0/8
		3	<i>Klebsiella pneumoniae</i>	0/5	0/4	0/8
		4	<i>Pasteurella pneumotropica</i>	0/5	0/4	0/8
		5	<i>Pseudomonas aeruginosa</i>	0/5	0/4	0/8
		6	<i>Staphylococcus aureus</i>	0/5	0/4	0/8
		7	<i>Streptococcus pneumoniae</i>	0/5	0/4	0/8
		8	<i>Klebsiella oxytoca</i>	0/5	0/4	0/8
		9	<i>Streptococcus equi</i> subsp. <i>Zooepidemicus</i>	0/5	0/4	0/8
		10	β -hemolytic <i>Streptococcus</i>	0/5	0/4	0/8
	消化道 病原	11	<i>Citrobacter rodentium</i>	0/5	未檢驗	未檢驗
		12	<i>Pseudomonas aeruginosa</i>	0/5	0/4	0/8
		13	<i>Salmonella spp.</i>	0/5	0/4	0/8
		14	<i>Klebsiella oxytoca</i>	0/5	0/4	0/8
		15	<i>Klebsiella pneumoniae</i>	0/5	0/4	0/8
		16	<i>Campylobacter jejuni</i>	0/5	0/4	0/8
寄生蟲 檢測	外寄生蟲	1	Flea	0/5	0/4	0/8
		2	Louse	0/5	0/4	0/8
		3	Mite	0/5	0/4	0/8
	大小鼠蟻蟲	4	<i>Syphacia spp.</i>	0/5	0/4	0/8
	腸道蠕蟲	5	<i>Aspiculuris tetraptera</i>	0/5	0/4	0/8
		6	<i>Rodentolepis nana</i>	0/5	0/4	0/8
		7	<i>Hymenolepis diminuta</i>	0/5	0/4	0/8
	腸道原蟲	8	<i>Spitronucleus spp.</i>	0/5	0/4	0/8
		9	<i>Giardia spp.</i>	0/5	0/4	0/8
		10	<i>Chilomastix spp.</i>	0/5	0/4	0/8
		11	<i>Eimeria spp.</i>	0/5	0/4	0/8
		12	<i>Entamoeba spp.</i>	0/5	0/4	0/8
		13	<i>Hexamastix spp.</i>	0/5	0/4	0/8
		14	<i>Trichomonads</i>	0/5	0/4	0/8
PCR 檢測	Cecum	1	<i>Clostridium piliforme</i>	0/5	0/4	0/8
	Lung	2	<i>Pneumocystis murina</i>	0/5	0/4	0/8
	Feces	3	<i>Helicobacter spp.</i>	0/5	0/4	0/8
剖檢及 肉眼 病理學	Lung, spleen, liver, kidney, stomach, pancreas, intestines, lympho nodes, reproductive tract, eyes, harderian gland, salivary gland, and brain			NSF (Non Specific Founding)	refer to the attachment	NSF (Non Specific Founding)

檢測說明 1.檢測單位：國家實驗動物中心 2.檢測結果：陽性檢體數/總檢體數。「0」表示未檢測出此病原。

報告簽署人：

獸醫師
曾信友
台獸師字6079

>015.1.7

管理師
2015.1.07
王毓權

AS core 2014 B區動物房例行健康監測						
Date	Serial NO.	Species	Specimen	Gender	Strain	Quantity
12/16	B103S4#01	Mouse	活體	Female	ICR	1
	B103S4#02			Female		1
	B103S4#03			Female		1
	B103S4#04			Female		1
	B103S4#05			Female		1
	B103S4#06			Female		1
	B103S4#07			Female		1
	B103S4#08			Female		1
合計						8

報告簽署人：

獸醫 曾信友
 台獸師字6079
 2015.1.17



Pathology Report

(編號：103-10488)

申請人/送檢人姓名：曾信友 先生/女士	申請單位：中央研究院 公用動物設施
聯絡電話：02-27899911	部門：檢疫室
e-mail 信箱： ascoreqroom@hotmail.com	地 址：台北市南港區研究院路二段 128 號 生醫所 N1001 公用動物設施
申請日期：2014 年 10 月 15 日	動物品系/送檢樣品/數量： Mouse, ICR /活體/ 38
送檢日期：2014 年 12 月 16 日	
完成日期：2014 年 12 月 17 日	

History

Thirty-eight mice were submitted for health monitoring including serology, microbiology, parasitology, PCR analysis and necropsy examination. The signalment of submitted animals as the following table:

Pathological No.	Original No.	Species	Gender	Necropsy date
103-10488-1	A103S4#01	ICR	Male	2014/12/16
103-10488-2	A103S4#02	ICR	Male	2014/12/16
103-10488-3	A103S4#03	ICR	Male	2014/12/16
103-10488-4	A103S4#04	ICR	Male	2014/12/16
103-10488-5	A103S4#05	ICR	Male	2014/12/16
103-10488-6	A103S4#06	ICR	Male	2014/12/16
103-10488-7	A103S4#07	ICR	Male	2014/12/16
103-10488-8	A103S4#08	ICR	Male	2014/12/16
103-10488-9	A103S4#09	ICR	Male	2014/12/16
103-10488-10	A103S4#10	ICR	Male	2014/12/16
103-10488-11	A103S4#11	ICR	Male	2014/12/16
103-10488-12	A103S4#12	ICR	Male	2014/12/16
103-10488-13	A103S4#13	ICR	Male	2014/12/16
103-10488-14	A103S4#14	ICR	Male	2014/12/16
103-10488-15	A103S4#15	ICR	Female	2014/12/16
103-10488-16	A103S4#16	ICR	Female	2014/12/16
103-10488-17	A103S4#17	ICR	Female	2014/12/16
103-10488-18	A103S4#18	ICR	Female	2014/12/16
103-10488-19	A103S4#19	ICR	Female	2014/12/16
103-10488-20	A103S4#20	ICR	Female	2014/12/16
103-10488-21	A103S4#21	ICR	Female	2014/12/16
103-10488-22	A103S4#22	ICR	Female	2014/12/16

103-10488-23	A103S4#23	ICR	Female	2014/12/16
103-10488-24	A103S4#24	ICR	Female	2014/12/16
103-10488-25	A103S4#25	ICR	Female	2014/12/16
103-10488-26	A103S4#26	ICR	Female	2014/12/16
103-10488-27	A103S4#27	ICR	Female	2014/12/16
103-10488-28	A103S4#28	ICR	Male	2014/12/16
103-10488-29	A103S4#29	ICR	Female	2014/12/16
103-10488-30	A103S4#30	ICR	Male	2014/12/16
103-10488-31	B103S4#01	ICR	Female	2014/12/16
103-10488-32	B103S4#02	ICR	Female	2014/12/16
103-10488-33	B103S4#03	ICR	Female	2014/12/16
103-10488-34	B103S4#04	ICR	Female	2014/12/16
103-10488-35	B103S4#05	ICR	Female	2014/12/16
103-10488-36	B103S4#06	ICR	Female	2014/12/16
103-10488-37	B103S4#07	ICR	Female	2014/12/16
103-10488-38	B103S4#08	ICR	Female	2014/12/16

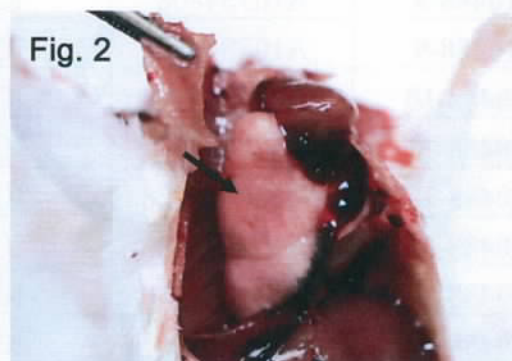
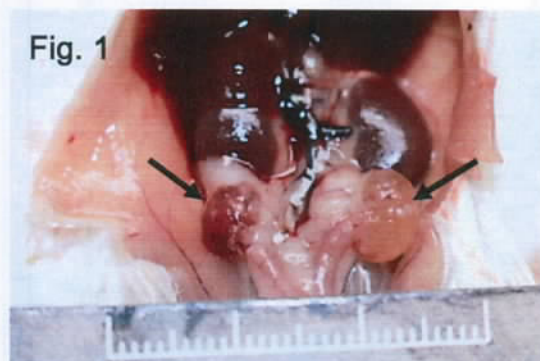
Gross lesions

The animals were sacrificed by exsanguinations under anesthesia with pure carbon dioxide.

No discharges from the nares, conjunctiva or anus were noted.

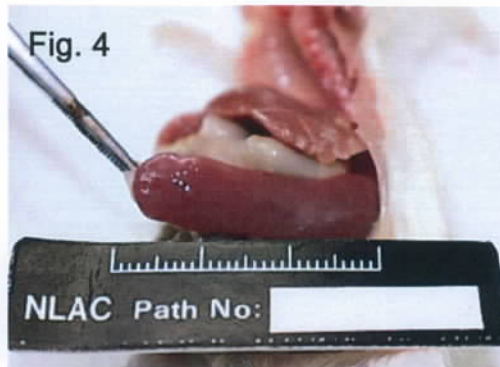
Cystic ovaries (Fig. 1, A103S4#25) were noted in six female mice (A103S4#15, #21, #24, #25 and B103S4#4, #6).

In A103S4#16 mouse, pale of the lung (Fig. 2) and 3 times enlarged of the spleen were observed.



In A103S4#17 mouse, several gross lesions were observed including pale of the lung (Fig. 3), 4-5 times enlarged of the spleen (Fig. 4), pale of the kidneys, enlarged of the liver, multifocal white spots over the hepatic surface (Fig. 5) and thickness of intestinal wall of the duodenum (Fig. 6)/rectum.

Stomach, heart, pancreas, lymph nodes, eyes, Harderian gland, salivary gland, and brain: No significant lesion.



Pathologists/病理醫師: License No./台獸師證字號:	李泔泓/陳幼嶺/陳姿妤 3432/5694/4523
Signature/簽章	  

- 附註：1. 本中心地址：台北市南港區研究院路二段 128 號。
2. 本報告僅對檢送樣品負責、須本實驗室人員簽名或蓋章始生效且其內容以任何方式複印或分離使用者無效。